

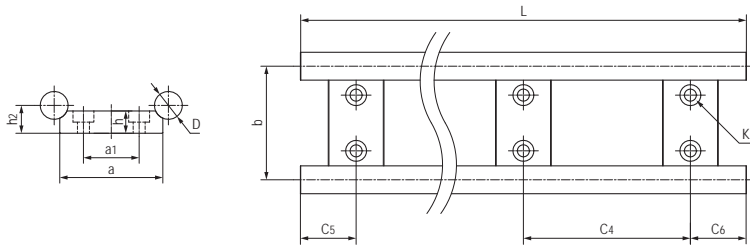
WR02双圆不锈钢直线导轨 Stainless steel linear guides, double round rail



产品特性 Product features

- 316Ti不锈钢双圆导轨
 - 较强的抗腐蚀能力
 - 配合LIN滑动膜抵抗污物
 - 免维护与无噪音运行
 - 标准安装宽度
- Dual guide rails made of stainless steel 316Ti
 - Good corrosion resistance
 - Resistance to dirt with LIN liners
 - Maintenance-free and no noise
 - Standard fitting width

标准规格 Standard specifications



产品编码 Part No.:

WR02-10-40-0000-ES1

材质 Material: 316Ti 不锈钢 Stainless steel
 长度 Length
 宽度 Width
 直径 Diameter

产品编码 Part No.	D [mm]	h [mm]	h ₂ [mm]	b [mm]	a _{-0.3} [mm]	a ₁ [mm]	C ₄ [mm]	C ₅ =C ₆ [mm]		K ₁ [mm]	L max. [mm]	重量 Weight [kg/m]
								min.	max.			
WR02-10-40-0000-ES1	10	5.5	9	40	40	-	120	20	79.5	*M6	3000	1.66
WR02-16-60-0000-ES1	16	12	14	58	54	-	120	20	79.5	M8	3000	4.59
WR02-20-80-0000-ES1	20	16	20	82	74	40	120	20	79.5	M8	3000	7.65

*M6: 通孔 Plain holes

**WR02-10-40/WR02-16-60为单排安装孔 a single row of mounting holes